

1822 Briv

Steel - Countersunk head
3.2 mm (1/8") - 4.0 mm (5/32")

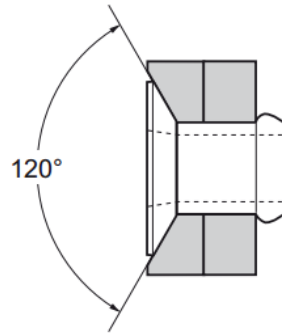
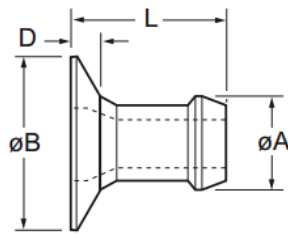
Features

- Bulbed tail and foreshortening of the fastener during installation ensures consistent high clamp and shear
- Bulbed tail and large head style provide a large bearing area for soft materials
- Tapered tail for ease of hole entry
- Expands radially during installation to ensure maximum hole fill
- Lower in-place costs than welding or nail rivets
- Can be used to assemble many materials including metal, plastic and aluminium alloy
- Can be bowl fed for larger volume applications using automated equipment



Material

- Low carbon steel, zinc plated, clear trivalent passivated



Part No.	Size ø	Grip Range		Hole Size		øB max.	D max.	L max.	øA max.	Fasteners per pod ± 1	Shear (typical) kN	Tension (typical) kN
		min.	max.	min.	max.							
01822-00406	3.2 (1/8")	1.52	2.79	3.26	3.34	5.84	0.76	4.77	3.17	64	0.95	1.65
01822-00407		2.54	3.81					5.79				
01822-00408		3.56	4.83					7.82				
01822-00410		4.57	5.84					8.84				
01822-00411		5.59	6.86									
01822-00505	4.0 (5/32")	1.56	2.93	3.97	4.04	6.98	1.02	5.18	3.90	59	1.65	2.80
01822-00506		2.15	3.43					5.69				
01822-00507		2.66	3.94					6.19				
01822-00509		3.68	4.96					7.21				
01822-00511		4.69	5.97					8.22				
01822-00513		5.71	6.99					9.24				

Special Option: Designed for thin sheet applications

01810-06480	3.2 (1/8")	1.27	2.29	3.26	3.34	5.84	0.74	4.32	3.17	72	0.95	1.65
01810-10375		1.45	1.80				0.69	4.19				